

KVT split cable gland

Patent

Cable entry of pre-fabricated cables

- ❑ The advantage of the split system featuring the split insert (page 18 and 19) is the installation of pre-terminated cables (e.g. valve connectors, computer connectors, Sub-D-connectors, ready-made looms) into machinery, plant, cabinets and through walls.
- ❑ This system is available in three sizes, which are determined by the bore hole – with KVT 32 installation of connectors is possible, fitting through a max. bore diameter of 36 mm. With KVT 63, up to 65 mm.
- ❑ KVT can be used for cable diameters from 3 to 34 mm.
- ❑ Gasket is included in delivery.



The matching inserts can be found on pages 18 and 19.

KVT split cable gland

	Description	Type	Order No. grey	Thread G	GL in mm	PU	
	For insert small 1 For insert large –		KVT 25	45201	M 25 x 1.5	14	10
	For insert small 1 For insert large –		KVT 32	45202	M 32 x 1.5	14	10
	For insert small 4 For insert large –		KVT 63-4*	45214	M 63 x 1.5	14	5
	For insert small – For insert large 1		KVT 63-1*	45211	M 63 x 1.5	14	5
<p>* Locknut M63, brass-nickel plated, is included in delivery.</p>							

Specification:

Material: Polycarbonate
 Colour: Similar to RAL 7035,
 UL-94 V0, self-extinguishing,
 halogen-free, silicone-free
 Protection to IP 54

Locknut SUB-D9

	Description	Type	Order No. grey	Thread G	PU
		KGM-SUB-D9	45105	M 32 x 1,5	10

Specification:

Material: Polycarbonate
 Colour: Similar to RAL 7035
 UL-94 V0, self-extinguishing,
 halogen-free, silicone-free

Split cable glands

KVT 32



Previously: Space of approx. 70 mm diameter was required.



Today: Now space of only 40 mm diameter is required!



When using the KVT 32, up to 50% less space is required.

The excellent benefit of the split cable gland KVT 32 in combination with the special locknut KGM-SUB-D9 can be shown with these application. The 9-pole SUB-D connectors, used virtually everywhere today, can be used and sealed with no difficulty.

By using a KT 2/.. double insert (they are shown on page

18), up to 2 of these connectors can be inserted and sealed. This ensures extremely high packing density in the smallest area! A cut-out of only 36 mm in the enclosure circuit cabinet wall is required! The time has passed, in which people had to use a conventional cable gland M50 or M63 for this purpose.

KVT-W90

The split KVT – W90 cable glands are used to insert and seal prefabricated cables at an 90° angle.

The KVT – W90 split cable glands are available in two sizes. The type dimensions determine the required hole diameter.

In particular, the KVT 50-W90 is perfectly suited to hold corrugated hoses as well as smooth hoses on the housing wall. A large number of cable entry inserts is available to the user.

➤ The matching inserts can be found on pages 18 and 19.

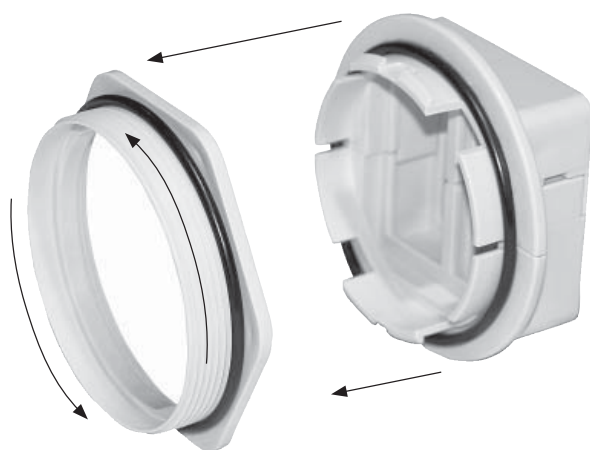
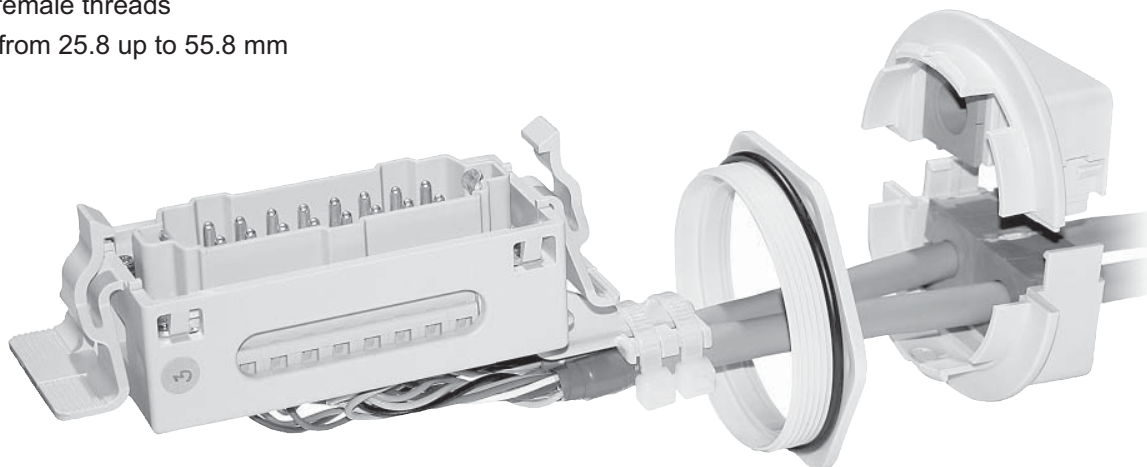


KVT-W90 degree cable gland, split					
	Type	Order No.	Thread G	Thread length in mm	PU
	KVT32 W90 For 1 insert small	45400	M 32 x 1.5	11.5	10
	KVT50 W90 For 1 insert large	45410	M 50 x 1.5	11.5	10

KVT-SNAP split cable glands

Quick and simple assembly, no tool needed

- ❑ Applicable on existing female threads
- ❑ Three sizes to choose from 25.8 up to 55.8 mm





KVT-SNAP was developed to install pre-fabricated cables/conduits (no screws and tools needed) through thick walls (>5 mm) e.g. into cast junction boxes. After cutting an adequate metric internal thread (M32/M40 or M63) into the wall of the cast junction box the snapping is simply screwed into the thread. The completely equipped cable gland is then pushed into the snap-ring.

The snap-ring also can be fastened using a locknut e.g. on the wall of a control cabinet with wall thickness up to 5mm. For disassembly only a screwdriver is necessary.

The matching inserts can be found on pages 18 and 19.

KVT-SNAP split cable gland

	Description / Type	Order No.	Size of opening in mm	TL in mm	Thread G	PU
	split gland grey KVT-SNAP-32 for inserts small 1 / large –	45130	25.8	11	M 32 x 1.5	10
	split gland grey KVT-SNAP-40 for inserts small 1 / large –	45134	33.8	11	M 40 x 1.5	10
	split gland grey* KVT-SNAP-63/1 for inserts small – / large 1	45154	55.8	11	M 63 x 1.5	5
<p>Specification: Material: Polycarbonate Colour: Similar to RAL 7035 UL-94 V0, self-extinguishing, halogen-free, silicone-free, Protection to IP 54</p>	split gland grey* KVT-SNAP-63/4 for inserts small 4 / large –	45152	55.8	11	M 63 x 1.5	5

* Locknut M63, brass-nickel plated, is included in delivery.