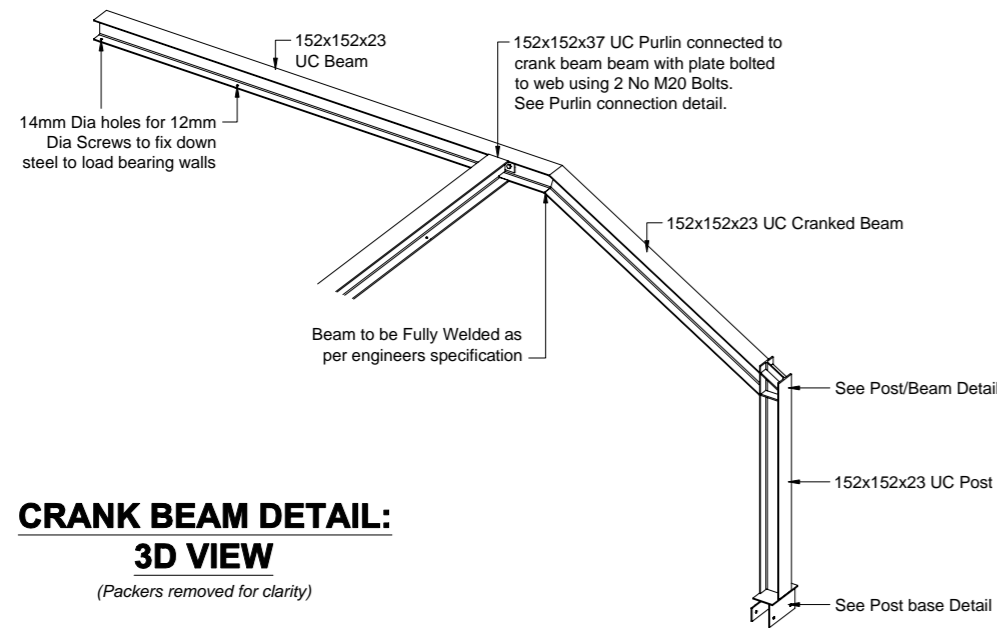
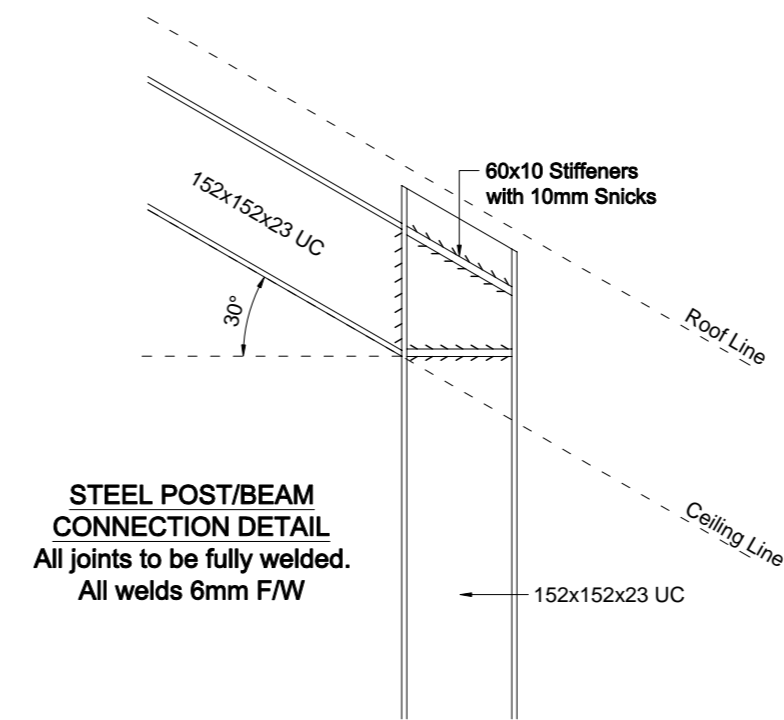
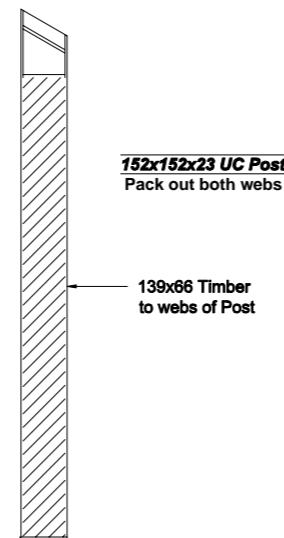
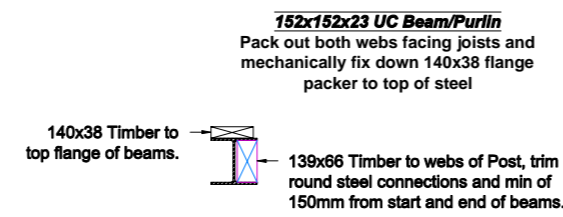


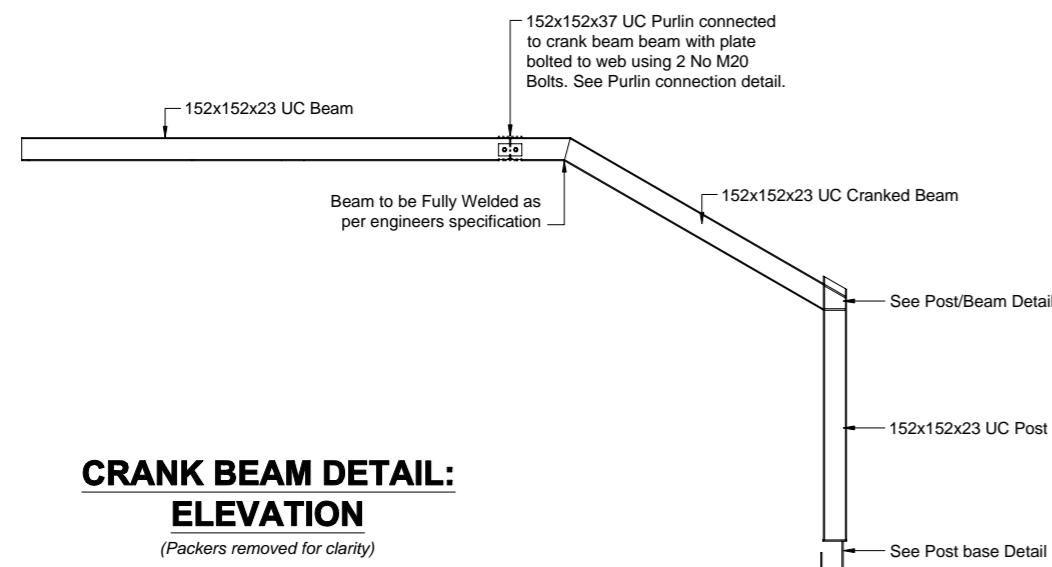
Purlin Connection Detail
 152x152x37 UC Purlin connection to 152x152x23 UC Beam via 8mm thick end plate and 2No. M20 Bolts.



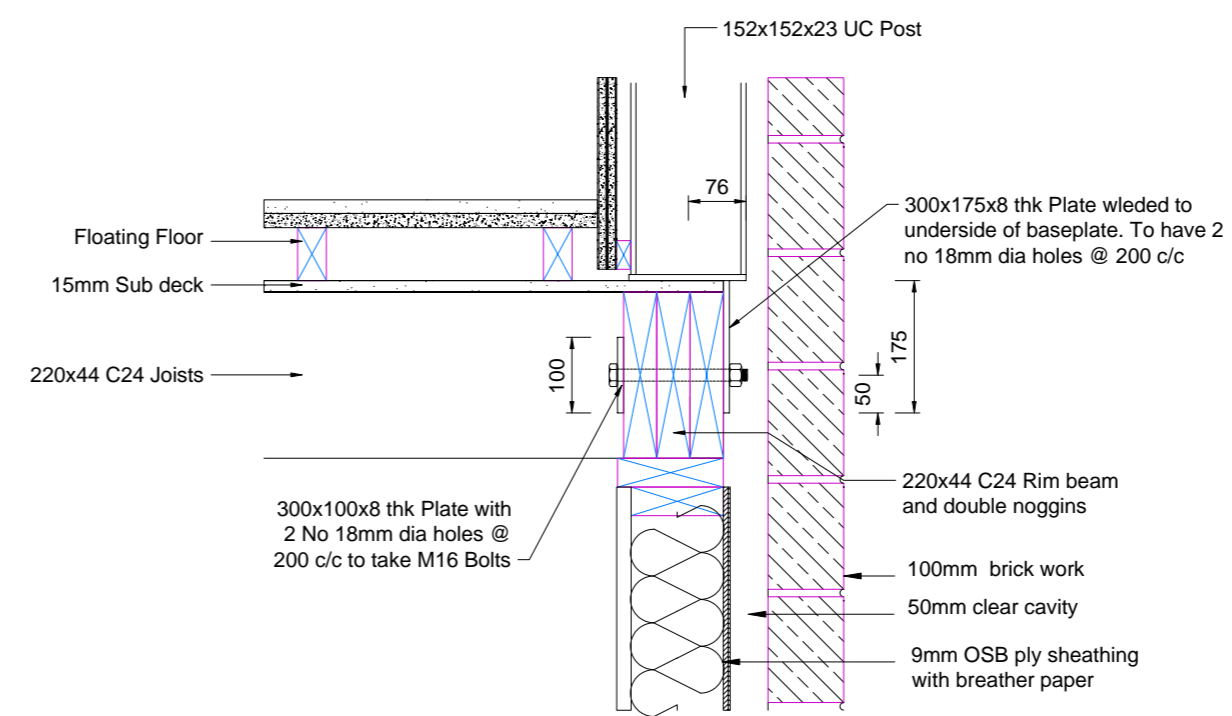
CRANK BEAM DETAIL: 3D VIEW
 (Packers removed for clarity)



STEEL POST/BEAM CONNECTION DETAIL
 All joints to be fully welded.
 All welds 6mm F/W



CRANK BEAM DETAIL: ELEVATION
 (Packers removed for clarity)



STEEL POST BASE DETAIL

Note:

All steel drawings should be read in conjunction with engineers details.

All steel finish details by others to meet NHBC / British Standard requirements.

IF IN DOUBT ASK!

Web packers to be site fixed after steel has been fixed in place

Rev	Description	Date
TimCon Design Ltd Independent Timber Frame Design Consultants Unit 4, Sunhill, Fleets Lane, Rylstone. BD23 6NA Tel: 01756 730548 Fax: 01756 730602		
Client	TimCon Design Ltd	
Project	EXAMPLE	
Drawing Title	STEEL DETAILS	
Status	CONSTRUCTION	
Scale	1:25	Date 24.04.07
Job No.	***	Drawn By MC
Drawing No.	902	Revision N/A
<small>THIS DRAWING IS SUBJECT TO COPYRIGHT AND SHOULD THEREFORE NOT BE REPRODUCED WITHOUT PRIOR CONSENT OF TIMCON DESIGN LTD.</small>		