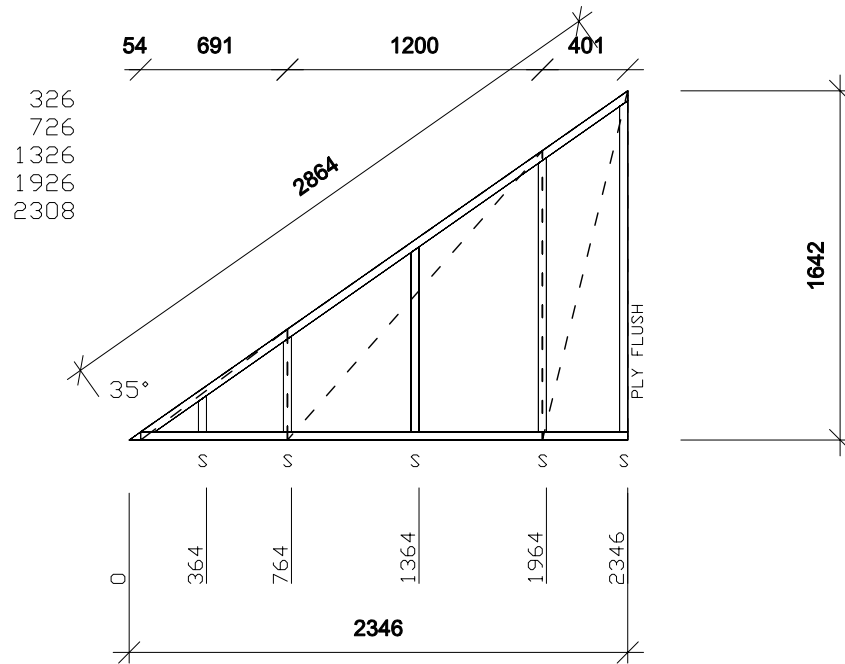


Int

Ext



Bottom Rail (EXT)	38 x 140 x 2346	C16	1	35.0	90.0
Top Rail (EXT)	38 x 140 x 2797	C16	1	145.0	55.0
Vertical Stud (EXT)	38 x 140 x 171	C16	1	90.0	125.0
Vertical Stud (EXT)	38 x 140 x 451	C16	1	90.0	125.0
Vertical Stud (EXT)	38 x 140 x 871	C16	1	90.0	125.0
Vertical Stud (EXT)	38 x 140 x 1291	C16	1	90.0	125.0
Vertical Stud (EXT)	38 x 140 x 1558	C16	1	90.0	125.0
BREATHER PAPER	2.17 m <sup>2</sup>		1		
Ply to frame	691 x 9.0 x 522	OSB	1	90.0	90.0
Ply to frame	1200 x 9.0 x 1362	OSB	1	90.0	90.0
Ply to frame	401 x 9.0 x 1642	OSB	1	90.0	90.0



Cladding Nailing : 150/300

Example	<b>EX 8</b> <b>38x140</b> <b>(34Kg)</b>
Plot 1 -GF	
MC	
April 24, 2007	