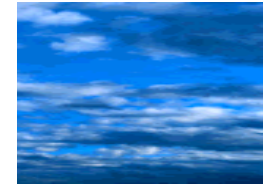


A continual requirement for both end users and suppliers is the predicted effects on the performance of a product as the result of conditions associated with "ageing"; including environmental factors and in-use wear and tear.



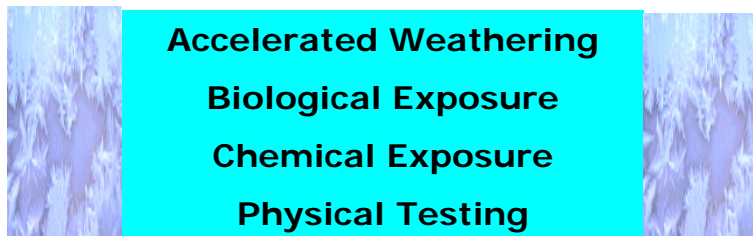
By assessing the "ageing" behaviour of a product under controlled conditions, vital information can be gathered to assist in a number of areas related to product durability including:



- ❖ **Product life span measurement**
- ❖ **Recommendations for "in-use" conditions**
- ❖ **Product Development**
- ❖ **Complaint Investigation**
- ❖ **Quality Assessment –fitness for purpose**

At Shirley Technologies, our expertise, range of testing facilities and advice on our findings, will ensure that your products have been reliably and comprehensively tested to meet regulatory requirements and ultimately your customers expectations.

Our extensive range of durability testing encompasses:



## **Accelerated Weathering**

This technique is used to assess the effects of product ageing under typical or extreme in-use conditions and can be used to determine manufacturers recommended guidelines for in-use conditions.

Shirley Technologies Ltd is one of the first UK testing service providers to commission the **UV Weathering Tester**.

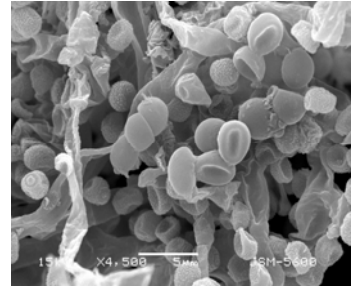
This equipment includes a spray feature to mimic thermal shock effects and an adjustable "solar eye" facility which provides a controlled, reproducible source of UV light to simulate different light ageing effects.



# Specialist Durability Testing Services

## **Biological Testing**

Where products are likely to be exposed to micro-organisms during their life span, resistance to attack by bacteria and fungi can be assessed using standard soil burial, agar plate & saturated atmosphere techniques. An example of a biological test would be the assessment of resistance to rotting and mildew ( BS 6085-1992, AATCC30) for fabrics used in outdoor products such as tents and awnings.



Where specific micro-organisms are involved, we have an extensive culture collection at our disposal.

## **Chemical Exposure**

Chemical exposure conditions can be re-created in the laboratory including resistance to sea-water, chlorinated water, solvents and bodily fluids, as well as the effects of heat and high humidity.



## **Chemical and Physical Testing**

A range of physical and chemical testing techniques are available for monitoring the effects of product degradation including :

- ❖ Tear and Abrasion Resistance
- ❖ Tensile Testing
- ❖ Colourfastness
- ❖ Light and UV Degradation



**For further information contact Shirley Technologies Ltd**  
**Tel: +44 (0) 161 869 1610 Fax: +44 (0)161 872 6492**  
**Or email [info@shirleytech.co.uk](mailto:info@shirleytech.co.uk)**

Registered Office: Shirley Technologies Ltd

Wira House, West Park Ring Road, Leeds LS16 6QL, United Kingdom

The supply of all goods and services is subject to our standard [terms and conditions](#)

Company No. 4669651 © Shirley Technologies Ltd 2004