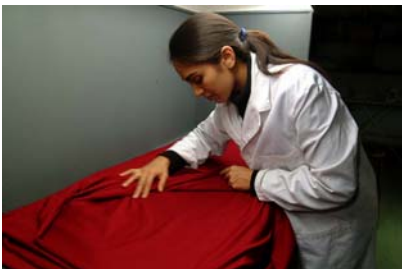


Analysis of Faults in Fabrics

At Shirley Technologies Ltd, we have the expertise to investigate, identify and advise on numerous processing faults associated with Woven and Knitted fabric including:

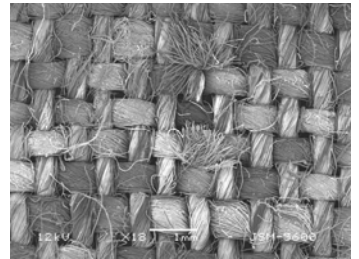
- ❖ **Stripes**
- ❖ **Unwanted warp and weft streaks**
- ❖ **Bars (woven fabrics)**
- ❖ **Barré (knitted fabrics)**
- ❖ **Fabric Damage**
- ❖ **Spirality (twisting in knitted fabrics)**
- ❖ **Printing Defects associated with fabric manufacture**



Various techniques are called upon during these investigations and a combination of training and experience dictates which tests will be required to determine the cause of the fault.

Typical examples of techniques that may be required during analysis of a defective fabric include . . .

- Detailed visual examination
- Microscopic examination of fabric / yarns / fibres
- Differential dyeing of cotton to look for differences in maturity
- Stripping and re-dyeing of each fibre type in a multi-component fabric
- Removal of individual components from the fabric using chemical dissolution
- Quantitative fibre composition of yarns from streaks or stripes and normal fabric using chemical dissolution
- Yarn crimp and linear density measurements
- Yarn twist
- Hot air retraction test on textured yarns
- Dynamic Mechanical Thermal Analysis (DMTA)



For further information contact Shirley Technologies Ltd

Tel: +44 (0) 161 869 1610 Fax: +44 (0)161 872 6492

Or email info@shirleytech.co.uk

Registered Office: Shirley Technologies Ltd

Wira House, West Park Ring Road, Leeds LS16 6QL, United Kingdom

The supply of all goods and services is subject to our standard [terms and conditions](#)

Company No. 4669651 © Shirley Technologies Ltd 2004