

# **REACH**

## **SUBSTANCES OF VERY HIGH CONCERN (SVHC)**

### **What is REACH?**

REACH is a new EU law on chemicals and their safe use. It deals with the registration, evaluation, authorisation and restriction of chemicals.

REACH replaces numerous EU laws related to chemicals and is complementary to other environmental and safety legislation but it will not replace sector specific legislation.

### **What are substances of very high concern (SVHC)?**

These are substances that may have potentially very serious and often irreversible effects on humans and the environment.

### **What is the REACH SVHC candidate list?**

This is a list of SVHC that have been identified and are to be considered for authorisation by REACH. If subsequently these substances are authorised then a company will have 42-48 months to replace it with an alternative, however there are some exceptions, for example, it would have very serious social economic impact, by in large the best option is to explore alternatives.

### **What are my obligations?**

REACH is a European community regulation that directly applies in all member states of the European Union.

If you are an EU based company then it is your responsibility to ensure any textile products including chemicals used in their manufacture whether they have been produced outside or within the EU have been evaluated to ensure they are REACH compliant.

If you are a textile company based outside of the European Union then you are obliged to inform your buyers that are EU based on the status of SVHC Within products/chemicals that are supplied to them.

By not supplying this information to your buyers you will be at a serious disadvantage to your competitors and this could potentially lead to your EU customers to source product from a REACH compliant supplier.

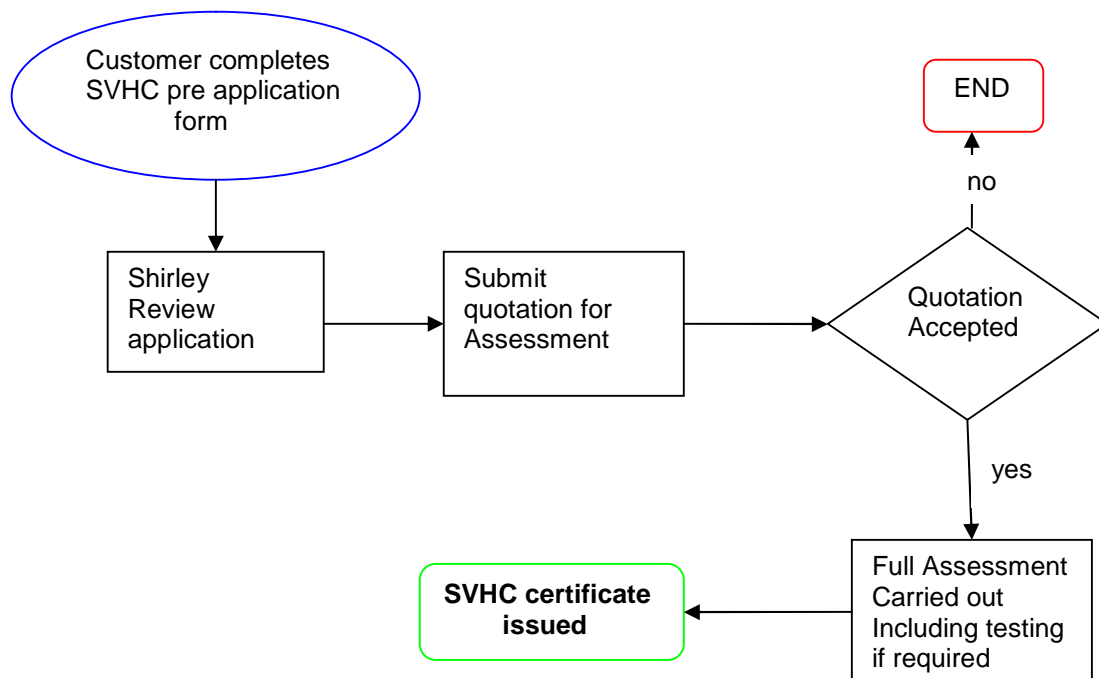
## What is Shirley Technologies REACH SVHC certification scheme?

Being an accredited ISO 17025 with many years experience carrying out ecological testing on textile and related products we have the expertise to be able to assist textile companies and companies supplying chemicals used in textiles, e.g. detergents, pigments, dyes, plastisols, in determining whether the products they are producing contain SVHC and if they do at what levels.

Our scheme has been designed so as to facilitate you in advising your customers that you have had an independent third party formal assessment performed to ensure that the products you are supplying to them are REACH compliant. The following diagram outlines how the scheme works:-

**REACH is already in force so you need to act now and keep ahead.**

### APPLICATION PROCESS FLOW



For further information please contact:

Singapore  
India  
China  
U.K.

Bimal Attodi  
Rajesh Maheshwari  
Wendy Wang  
Asif Shah

[bimal.attodi@shirleytech.com](mailto:bimal.attodi@shirleytech.com)  
[India@shirleytech.co.uk](mailto:India@shirleytech.co.uk)  
[stl@cbbc.org.cn](mailto:stl@cbbc.org.cn)  
[asif.shah@shirleytech.co.uk](mailto:asif.shah@shirleytech.co.uk)



**Shirley  
Technologies  
Ltd**

Unit 12, Westpoint Enterprise Park, Clarence Avenue  
Trafford Park, Manchester, M17 1QS, UK  
Tel: +44 (0)161 869 1610 Fax: +44 (0)161 872 6492

e-mail: [info@shirleytech.co.uk](mailto:info@shirleytech.co.uk)  
Web: <http://www.shirleytech.co.uk>